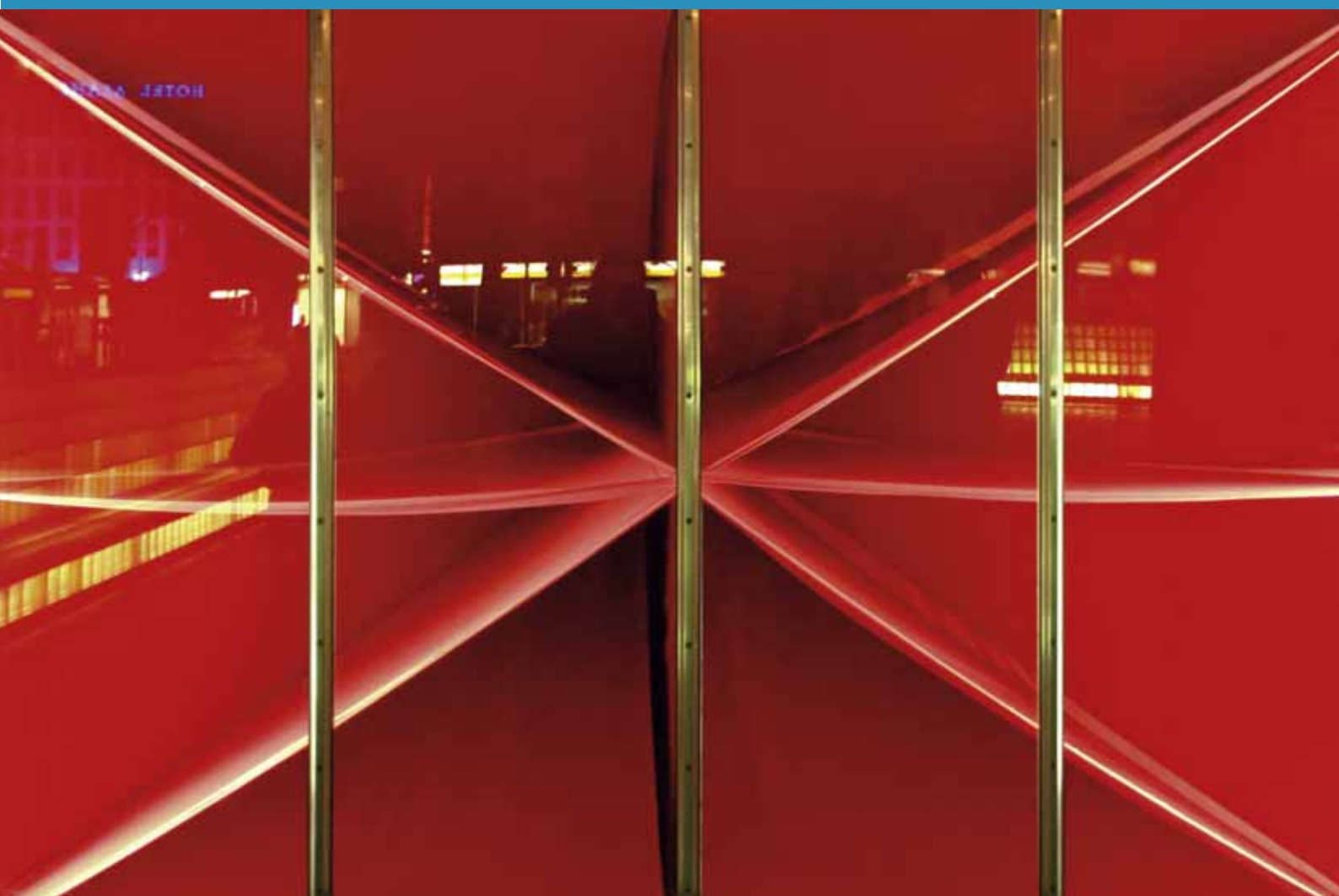


# Maxim Wakultschik

Collections, projects, exhibitions





# Maxim Wakultschik

Collections, projects, exhibitions

© 2008 Maxim Wakultschik  
© 2008 VG Bild-Kunst, Bonn  
© 2008 Galerie Burkhard Eikelmann

Design:  
Oleg Yushko  
Maxim Wakultschik

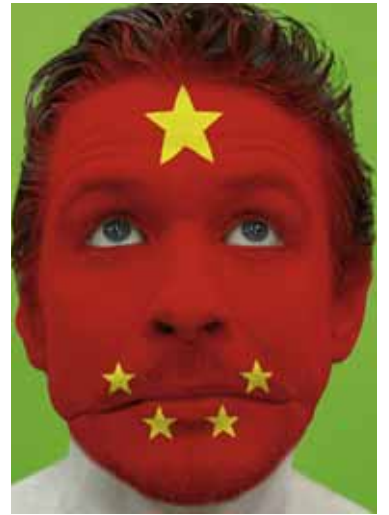
Photographs:  
Ivo Faber  
Maxim Wakultschik  
Hendrik Lietmann  
Andrei Dureika

Printed in Germany

Editor:  
Galerie Burkhard Eikelmann  
Ackerstr. 13  
40233 Düsseldorf  
Fon (+49) 0211 303 777 3  
Fax (+49) 0211 86 93 010

ISBN 978-3-9811516-3-3





Greenland  
Germany

England  
Kazakhstan

USA  
China

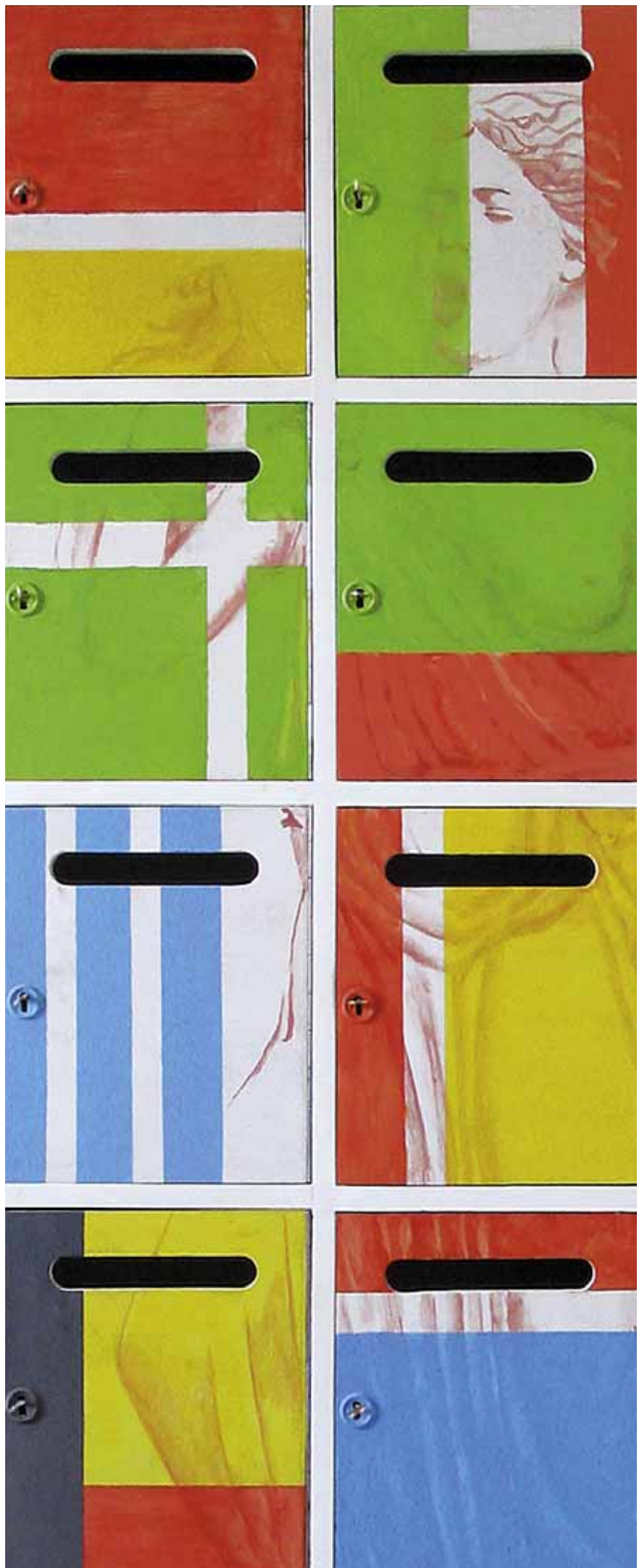
“Flags“, 2006  
(I’m a citizen of the world),  
selfportraits, photography



“The Abduction of Europe“, 2002  
wooden pillarbox, acrylic, rubber  
roles, castles and keys, 175x83x18,5 cm  
(68.7“x32.5“x7.2“)



France  
Brazil





object boxes, 2006-2007  
 each: plexiglas, mixed media,  
 100 x 80 x 23 cm (39.3" x 31.4" x 9")

*above left:*  
 "Deception", exhibition in Kunsthalle "Neufer am Park",  
 Pirmasens, Germany, 2007

*above :*  
 "identity", exhibition in Gallery Seidel, Cologne, Germany,  
 2005

*above down right:*  
 "Deception", exhibition in Gallery Burkhard Eikermann,  
 Düsseldorf, Germany, 2007

*next page:*  
 "Deception", exhibition in Kunsthalle "Neufer am Park",  
 Pirmasens, Germany, 2007



“Jolie“, 2007 (detail)  
plexiglas, mixed media,  
100 x 80 x 23 cm (39.3” x 31.4” x 9”)



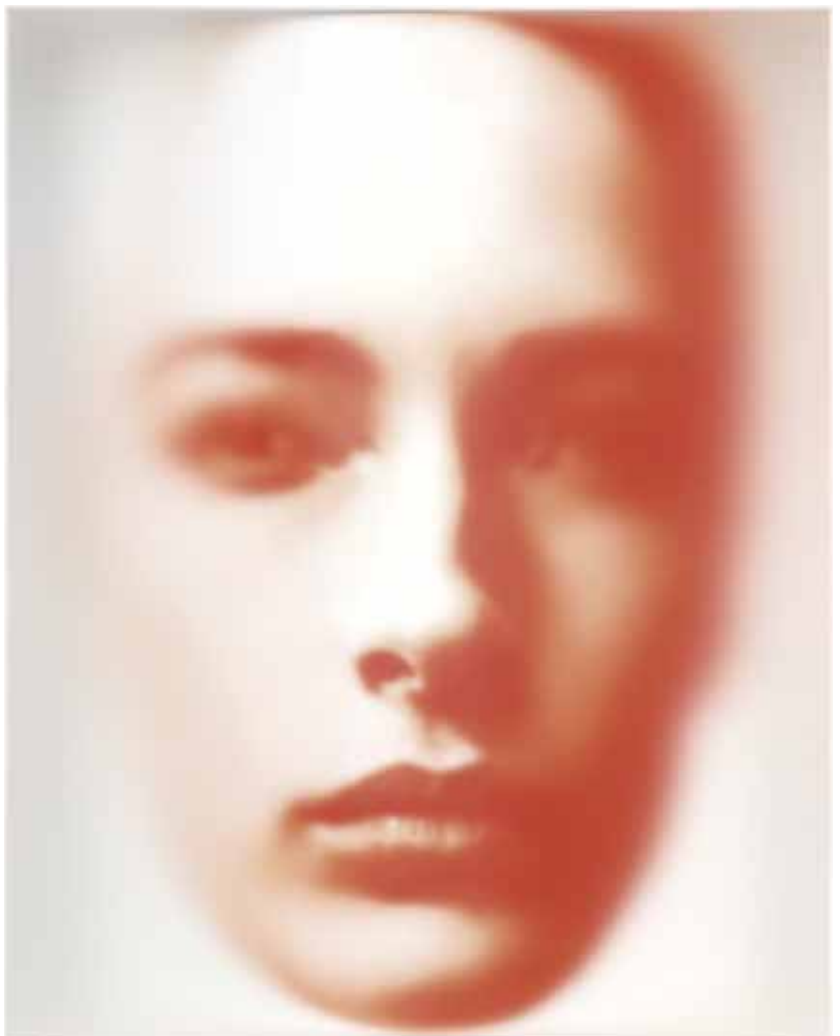
“Lida“, 2007  
plexiglas, mixed media,  
100 x 80 x 23 cm (39.3” x 31.4” x 9”)

“identity“, exhibition in Gallery Seidel,  
Cologne, Germany, 2005



“Christine“, 2007  
plexiglas, mixed media,  
100 x 80 x 23 cm (39.3” x 31.4” x 9”)

“Felicity“, 2007  
plexiglas, mixed media,  
100 x 80 x 23 cm (39.3” x 31.4” x 9”)





portraits, 1999-2004,  
each: 100x100 cm (39.3"x39.3"), acrylic on canvas

*above:*  
"art · drei · räume", exhibition in kunsthau Mettmann,  
Mettmann, Germany, 2001

*right page above:*  
"face to face", exhibition in Gallery Anya Tish, Houston/  
Texas, USA, 2004

*right page below:*  
"Vogue #I", 2006, "Woman Green", 2006,  
"Man Green", 2006, "Vogue #II", 2006





*above:*

“Woman with handbag”, 2002  
acrylic on canvas, 400x150 cm (157.4“x59“)

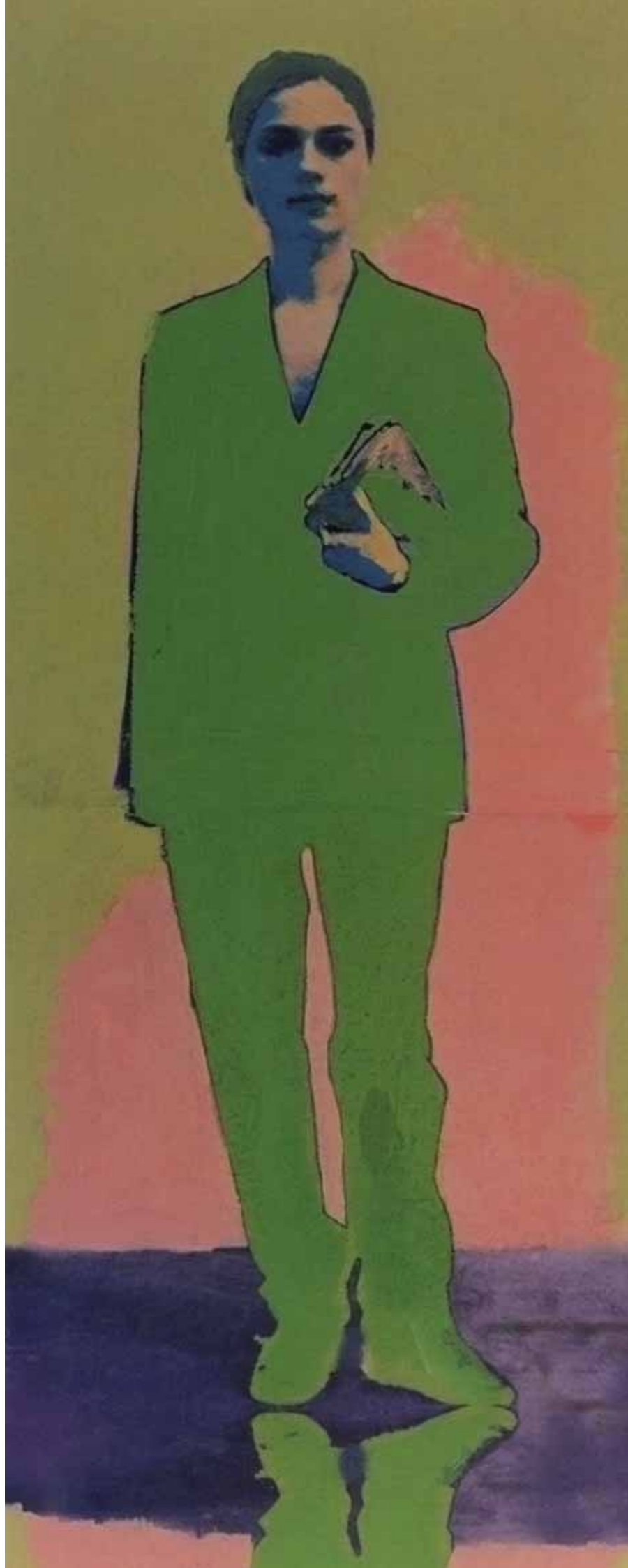
*right page:*

“Woman with handbag”, 2001  
study for Hewlett Packard, acrylic on canvas on wood, 54,5x21 cm (21.2“x 8.2“)

*right page left below:*

“untitled”, 2002  
acrylic on canvas, 135x380 cm (53“x 149.5)

Collection Hewlett Packard  
Hewlett Packard, Böblingen, Germany





*above left:*  
"sitting woman", 2006 (detail)  
oil on canvas, 120x70 cm (47.1"x27.4")

*above middle and right page:*  
"art • drei • räume", exhibition in kunsthau Mettmann,  
Mettmann, Germany, 2001

*right page:*  
"sitting woman #1, #2", 2004  
oil on canvas, 100x50 cm (39.4"x19.6")





“Example – human being“, exhibition in Kunstmuseum Hollfeld, Hollfeld, Germany, 2002



*below:*

“Dancing“, 2002

4 figures on a column, acrylic on wood,

each figure: H 150 cm (59“), ø 70 cm (27.4“); column 365 cm (143.8”)

office building „Platinum am Sachsenamm“, Berlin, Germany

Collection AXA, Cologne, Germany

*right page above:*

“Landscapes“, 2003

each: acrylic on wood, 83x58 cm (32.5“x 22.7“)





*left page above:*  
"Woman in gold", 2006  
oil on canvas, 120x70 cm (47.2"x27.4" )

*below :*  
"Magnetit", 2002, acrylic on canvas on plywood, 195x83cm, (76.6"x32.5")  
Collection Denk GmbH, Berlin, Germany

*right page left:*  
"The Glassy Human Being", 2002  
ceramic colors on acrylic glass,  
each: figure 180x50x0,8 cm (71"x18.6x0.2")

*right page right:*  
"untitled", 2003, acrylic on plywood, 530x190 cm (208.4"x74.6")  
office building "Landsberger Forum", Berlin, Germany  
Collection ProFonds GmbH, München, Germany







“Deception“, exhibition in Kunsthalle “Neufer am Park“, Pirmasens, Germany, 2007

“Deceptive Vision“, 2007, mixed media, 240x180x43 cm (94.4“x70.7“x17“)

“Big Still Life #1“, 2007, mixed media, 200x160x40 cm (78.6“x63“x15.6“)



"Janus", 2006-2007

each: oil on paper on wood, 91x85x11 cm (35.6"x34"x4.2")

*above:*

"Deception", exhibition in Gallery Burkhard Eikelmann,  
Düsseldorf, Germany, 2007

*down left:*

"Janus #10", 2007 (detail)

*down:*

"Deception", exhibition in Kunsthalle "Neufer am Park",  
Pirmasens, Germany, 2007

*right page:*

"Dualities", exhibition in Gallery Anya Tish, Houston/Texas,  
USA, 2006

*right page above:*

"Janus # 6", 2007 (detail)







“Rolling Heads”, 2003

round objects, each: wood, glossy lack, Ø 80 cm (31.4“)

*left page above:*

group exhibition in Museum Baden, Solingen, Germany, 2003

*left page below:*

“Coincidence I/2003“, exhibition in Kulturforum “Ignis“, Cologne, 2003



“Deception“, exhibition in Kunsthalle “Neufer am Park“,  
Pirmasens, Germany, 2007

“Dualities“, exhibition in Anya Tish gallery, Houston/  
Texas, USA, 2006





“art · drei · räume“, exhibition in kunsthau Mettmann, Mettmann, Germany, 2001

*right page above:*

“Reflexion“, (“Lida“, “Germany“, “Mexico“, “Sharon“, “USA“, “Italy“), each: wooden box, acrylic glass, mixed media, 28x23x13 cm (11“x9“x5“)

*right page middle:*

“Portraits“, 2003  
each: wooden box, glass, mixed media, 28x23x13 cm (11“x9“x5“)  
Collection Bach, Langheid & Dalmayr, Cologne, Germany

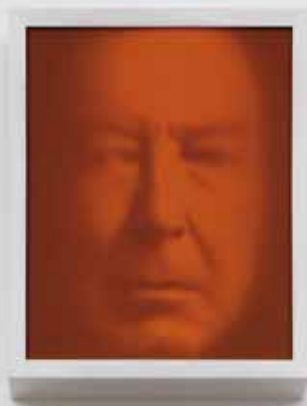
*right page below:*

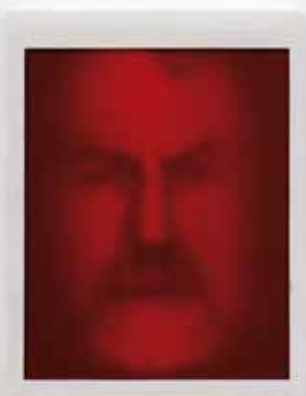
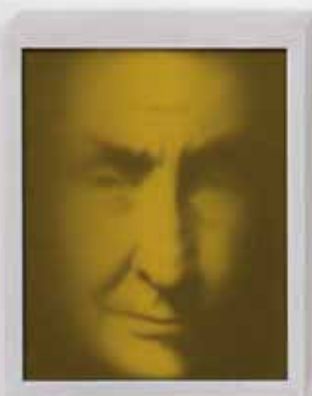
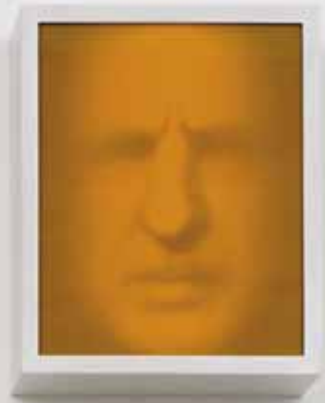
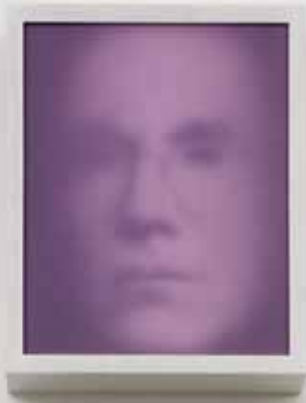
“Face to Face“, exhibition in Gallery Anya Tish, Houston/Texas, USA, 2004





*next page:*  
"Reflexion" (artists), 2006-2007  
each: wooden box, acrylic glass,  
mixed media, 28x23x13 cm  
(11"x9"x5")







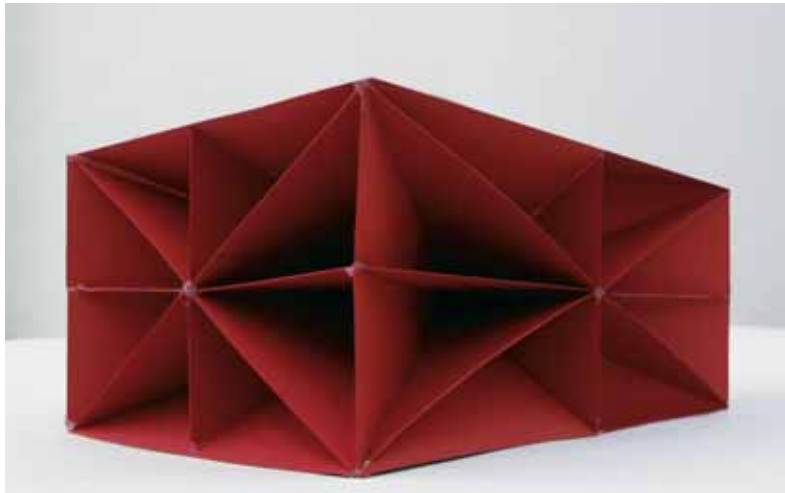
*above:*  
“einmalich“, exhibition in municipal gallery „Blauhaus“,  
Xanten, Germany, 2004

*left:*  
“untitled“, 2003  
acrylic on wood, 40x40x3,6 cm (15.6“x15.6“x1.4“)

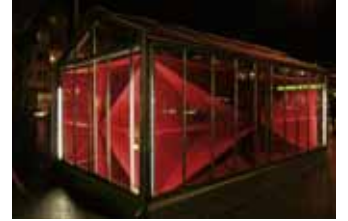
*right page above:*  
“untitled“, 2003, acrylic on wood, 32x32x3 cm  
(12.5“x12.5“x1.4“)

*right page below:*  
“Face to Face“, exhibition in gallery Studio 40, Düsseldorf,  
Germany, 2004





“Die Falle - the trap”, installation in  
Glashaus, Düsseldorf, Germany, 2006  
red canvas, steel rope  
600x345x330 cm (236”x136”130”)





## Maxim Wakultschik

1973 born in Minsk, Belarus  
1992 - 2000 studies at the Düsseldorf Art Academy under Professors Beate Schiff and Janis Kounellis, Düsseldorf, Germany  
Resides and works in Düsseldorf, Germany

### Awards

2006 Special price for originality, "Kunstpreis Wesseling", Wesseling, Germany  
2005 Art Award PSD Bank Rhein-Ruhr, Düsseldorf, Germany  
2001 Art Award savingbank Bayreuth, Bayreuth, Germany  
Kubo Art Award, Young Artist Competition, Stadtwerke Herne AG, Herne, Germany  
„Emprise Art Award 2001“, Museum NRW-Forum, Düsseldorf, Germany  
2000 Kö-Galerie Art Award, Düsseldorf, Germany  
Caspar von Zumbusch Prize, Herzebrock-Clarhorst, Germany  
1987 „Union Competition“, Diploma, Moscow, Russia

### Solo Exhibitions

2008 Gallery Anya Tish, Houston, Texas, USA ww  
2007 „Deception“, Gallery Eikelmann, Düsseldorf, Germany (Catalog)  
Kunsthalle „Neufer am Park“, Pirmasens, Germany  
2006 „Dualities“, Anya Tish Gallery, Houston, USA (Catalog)  
„Snare“, Kunstraum „Glashaus“, Düsseldorf (Catalog)  
2005 „Identität“, Gallery Seidel, Cologne, Germany  
2004 „Face to Face“, Anya Tish Gallery, Houston, Texas, USA (Catalog)  
„einmal-ich“, Municipal Gallery „Blauhaus“, Xanten, Germany  
2003 „Face to Face“, Gallery 40, Düsseldorf, Germany (Catalog)  
2002 „Example – human being“, Kunst - Museum, Hollfeld, Germany  
2001 HWL Gallery and Editions, Düsseldorf, Germany  
„art • drei • räume“, Kunsthaus Mettmann e.V., Mettmann, Germany

### Group Exhibitions

2008 „Our favorites“, Berezniysky Gallery, Berlin, Germany  
2007 „Revision“, Berezniysky Gallery, Berlin, Germany  
„Revision“, Berezniysky Gallery, Kiev, Ukraine  
Gallery Christine Hoelz, Düsseldorf, Germany  
2006 „White“, Anya Tish Gallery, Houston, Texas, USA  
Municipal Gallery, Kaarst, Germany  
Municipal Gallery Schwingeler Hof, Wesseling, Germany (Catalog)  
„Current Belorussian Art“, Centre for contemporary Art, Moskau  
2005 „Revision“, Art Forum BBK, Düsseldorf, Germany  
„Cooperative experience“, Gallery Christine Hoelz, Düsseldorf, Germany (Catalog)  
2004 Kunsthaus Mettmann, Mettmann, Germany (Catalog)  
Cubus Kunsthalle, Duisburg, Germany (Catalog)  
„5. Kunstkreuz 2004“, Kunstraum Frankfurter Allee 2, Berlin, Germany  
Karl Ernst Osthaus-Museum, Hagen, Germany  
2003 Museum Voswinkelshof, Dinslaken, Germany  
Museum Baden, Solingen, Germany  
„Emprise Art Award 2003“, Museum NRW-Forum, Düsseldorf, Germany (Catalog)  
„Licht Raum Europa“, Reithalle in Klenzepark, Ingolstadt, Germany (Catalog)  
Municipal Gallery Schwingeler Hof, Wesseling, Germany (Catalog)  
2002 „Emprise Art Award 2002“, Museum NRW-Forum, Düsseldorf, Germany  
Hetjens-Museum (Deutsches Keramikmuseum), Düsseldorf, Germany  
2001 23rd International Art Exhibition, Hollfeld, Germany  
Flottmann-Hall, Herne, Germany  
2000 Orangerie in Palace Rheda, Rheda-Wiedenbrück, Germany  
Gallery „Seidel“, Cologne, Germany  
„Emprise Art Award 2000“, Museum NRW-Forum, Düsseldorf, Germany (Catalog)  
1999 Museum - Schloss Fürstenberg, Weser, Germany

### Collections:

Booz-Allen & Hamilton (Frankfurt, Germany), Fast Trade AG (Cologne, Germany), Bach, Langheid & Dalmayr (Cologne, Germany), ProFonds GmbH (München, Germany), Denk GmbH (Berlin, Germany), Emprise Consulting GmbH (Düsseldorf, Germany), Hewlett Packard (Germany), Ernst & Young, Deutsche Allgemeine Treuhand AG (Frankfurt, Germany), AXA (Cologne, Germany), Qiagen AG (Hilden, Germany), PwC Deutsche Revision AG (Düsseldorf, Germany), PSD Bank Rhein-Ruhr (Düsseldorf, Germany), Sparkasse (Herne, Germany), Grandrath GmbH (Düsseldorf, Germany).

ENTHÜLLUNG: 24. MÄRZ, 19 UHR

MAXIM WAKULTSCHIK

DIE FALLE